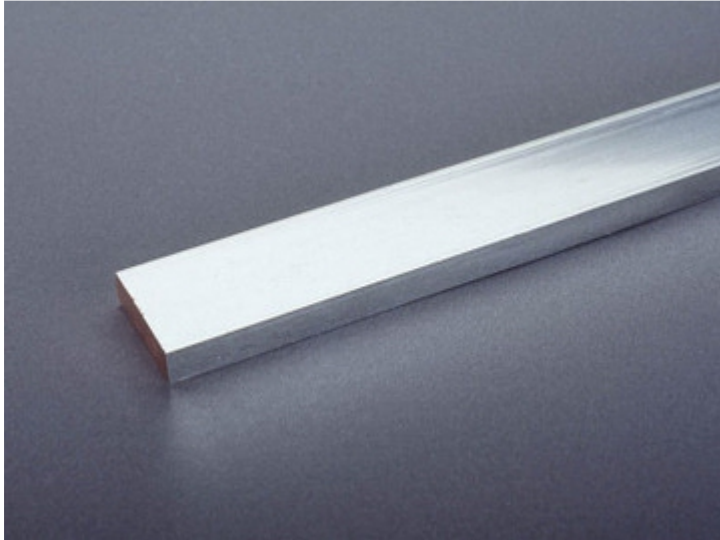


busbar 30 x 10 (01 625)



Description

Article

Part No.: 01 625
busbar 30 x 10
length 2,40 m, tinned

System

60Classic
100Energy
185Power
185mm-System
centre feed unit

Product group 06

Subgroup 83

pack size 1

EAN 4021267016258

Advantages of the product

Tin-plated Cu busbars considerably reduce the effort of preparing the contact points.
The Cu busbars are effectively protected against aggressive media.

Catalog page 2015 : 2/2, 3/1, 4/1

eCl@ss 6.1 27370303

eCl@ss 7.1 27370303

ETIM 4.0 EC001522

ETIM 5.0 EC001522

Approvals

Standards

IEC 61439-1:2011

Approvals

CSA, UL, Germanischer Lloyd



for UL feeder circuits >250V

Type number: 30x10-L

UL file: E123577, UL category (for USA): NMTR <http://www.ul.com>

UL file: E123577, UL category (for Canada): NMTR7 <http://www.ul.com>

CSA file: 110285, CSA class: 3211-37 <http://directories.csa-international.org>

CCC approval: no certification required

Product data

Electrical data

Power dissipation:

The power dissipation at a typical load of 80% of the rated current results to 40.1 W.

(The power dissipation for operation with rated current would be 62.7 W.)

short-circuit withstandability: see product description of the used busbar support

Mechanical data

L x W x D: 2400 x 30 x 10

Weight: 643.2 kg/100

cross-section: 300 mm²

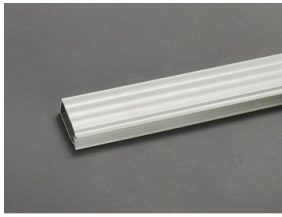
Edge radius 0.5

Material properties

Main body: Copper, tinned

corrosion-resistant, also in aggressive environments

Accessories



01 245

busbar cover

for 12 - 30 x 10 busbar

1 m long